

# X SERIES NETWORK CAMERA



The XSEBATVIP4MP28-AI security camera offers exceptional 4MP resolution for crystal-clear monitoring, ensuring enhanced safety around your property. Featuring deterrence lights and a loud siren, it actively deters intruders. The camera's Spectral Light technology enables full-color night vision, providing detailed visibility even in low light conditions. Equipped with AI features, it intelligently detects motion, helping you monitor your surroundings with ease. With two-way communication, you can interact with visitors or potential threats in real-time. Protect your property with this advanced, high-performance security camera.



This camera model is also available in white - XSEBATVIP4MP28-AI-B

## XSEBATVIP4MP28-AI



4MP RESOLUTION



2.8MM LENS



WARMLIGHT UP TO 20M



DETERRENCE LIGHTS  
AND SIREN



SPECTRAL LIGHT



SEE IN FULL COLOR  
AT NIGHT



DUSTPROOF  
& WATER RESISTANT



TWO-WAY  
COMMUNICATION



MICRO SD CARD  
SLOT UP TO 256GB

## VIDEO

IMAGING DEVICE	1/1.8"
EFFECTIVE PIXELS	4MP (2688x1520)
SCANNING SYSTEM	Progressive CMOS
MIN. ILLUMINATION	Color 0.0005 Lux @ (F1.0, AGC ON) ; B/W 0 lux @ IR ON

## LENS

FOCAL LENGTH (ZOOM RATIO)	2.8 mm
MAX. APERTURE RATIO	F No. 1.0
ANGULAR FIELD OF VIEW	Horizontal:112°, Vertical: 61°, Diagonal:134°
MIN. OBJECT DISTANCE	0.2m
LENS TYPE	M16

## OPERATIONAL

IR LED	NA
WARMLIGHT	2
RED AND BLUE LIGHT	2 (1 Red & 1 Blue)
IR VIEWABLE LENGTH	NA
WARMLIGHT VIEWABLE LENGTH	Up to 20m
TYPE OF COMPLEMENTARY LIGHT	Default warm light
BACKLIGHT COMPENSATION	Off/On (5 Zone)
WIDE DYNAMIC RANGE	WDR
DIGITAL NOISE REDUCTION	3D DNR
MOTION DETECTION	Off/On (8 Level)
IMAGE SETTING	Full Color Mode
PRIVACY MASKING	Off/On (4 Zone, Rectangle)
GAIN CONTROL	Auto
WHITE BALANCE	Auto/Manual
ELECTRONIC SHUTTER SPEED	1/5 ~ 1/20000s
ON-BOARD STORAGE	Micro SD slot, up to 256GB
ALARM	NA
AUDIO	Built-in microphone&Speaker
HARDWARE RESET	Yes
SMART FEATURES	Rare Sound Detection (SD) , Perimeter Intrusion Detection (PID), Face Detection (FD), Stationary Object Detection (SOD), Crowd Density Detection (CD), Human&Vehicle Detection (PD&VD), Line Crossing Detection (LCD), Queue Length Detection (QD), Heat Map (HM), Cross Counting (CC), License Plate Detection (LPD), Region Entrance and Exiting (RE), Intrusion, Noise Detection

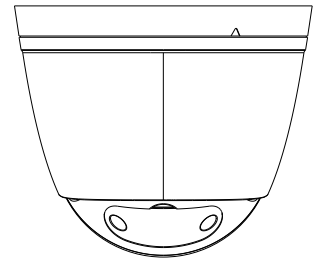
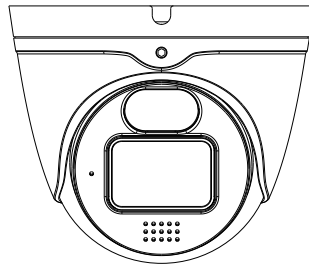
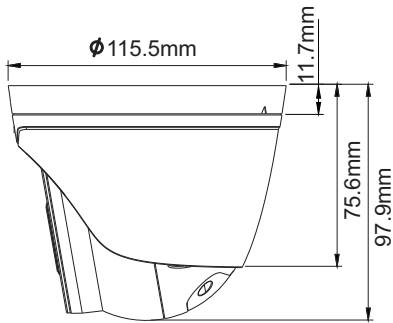
## NETWORK

ETHERNET	RJ45(10/100BASE-T)
VIDEO COMPRESSION FORMAT	H.265/H.264/H.265+/H.264+/MJPEG
RESOLUTION	<p><b>Mainstream</b> 4MP(2688x1520),3MP(2304x1296), 1080P(1920x1080)</p> <p><b>Substream</b> 1080P(1920x1080),720P(1280x720),VGA(640x480)</p> <p><b>Mobile Stream</b> VGA(640x480), QVG(320x240))</p>
VIDEO QUALITY ADJUSTMENT	256Kbps ~ 8Mbps
BITRATE CONTROL METHOD	CBR/VBR
IP	IPv6
PROTOCOL	TCP/IP,HTTP,DHCP,DNS,DDNS,RTP/RTSP, SMTP,NTP,UPnP,SNMP,HTTPS,FTP
SECURITY	IP address filter:complicated password: Authenticated username and password
APPLICATION PROGRAMMING INTERFACE	ONVIF( Profile G/M/S/T)
STREAMING METHOD	Unicast/Multicast
COMPATIBLE WEB BROWSERS	IE10/11, Safari V12.1/above, Firefox V.52/above, Google chrome V.57/above, Edge V.79/above

## GENERAL

OPERATING CONDITIONS	-35°+60°C/ Less than ≤ 95% RH
INGRESS PROTECTION	IP67
INPUT VOLTAGE / CURRENT	D12V/POE (IEEE802.3af)
POWER CONSUMPTION	DC12V:max 5.44W; POE(48V): max 6.48W
COLOR/MATERIAL	White/Metal
DIMENSION (LXHP)	115.5mm*97.9mm

## DIMENSIONS



## ACCESSORIES



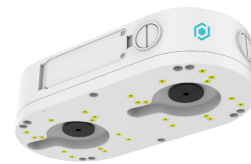
**EB3BASE4**  
JUNCTION BOX



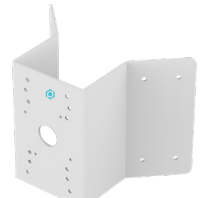
**EB3BASE4-G**  
PENDANT



**WMB6**  
WALLMOUNT BRACKET



**DBASEC**  
DOUBLE JUNCTION BOX



**COMB6**  
CORNER MOUNT BRACKET

OR

OR

+

OR



**TEBBASE1**  
JUNCTION BOX



**TEBBASE1-G**  
PENDANT



**CMB6-G**  
CEILING MOUNT BRACKET



**CMB6-EXT-120**  
EXTENDABLE CEILING MOUNT BRACKET



**PMB6**  
POLE MOUNT BRACKET