

# THERMAL NETWORK CAMERA



Discover our B7T4IP5MP-AI thermal imaging camera, offering advanced security features. With 5MP resolution, it delivers crystal-clear images, capturing every detail with precision. Two-way communication enables real-time interaction, improving situational awareness. The in/out alarm adds a layer of security by alerting to potential threats. Equipped with temperature measurement capabilities, it goes beyond traditional monitoring by identifying anomalies. The bi-spectrum fusion image offers a unique view by combining thermal imaging with optical channel details. Invest in unrivalled safety with our thermal imaging camera.



## B7T4IP5MP-AI



5MP RESOLUTION



3.6MM LENS



IR UP TO 30M



DETERRENCE  
LIGHTS & SPEAKER



ALARM/AUDIO  
IN/OUT



SEE IN COLOR  
AT NIGHT



MEASURES THE  
TEMPERATURE



WATERPROOF AND  
DUST-TIGHT



MICRO SD SLOT  
UP TO 256GB



## THERMAL MODULE

IMAGE SENSOR	Vanadium Oxide Uncooled Focal Plane Arrays
MAX. RESOLUTION	256*192
PIXEL INTERVAL	12µm
RESPONSE WAVEBAND	8-14µm
NETD (NOISE EQUIVALENT TEMPERATURE DIFFERENCE)	<40mk@25°C F#1.0, 25Hz
LENS (FOCAL LENGTH)	3.2mm
IFOV	3.75 mrad
FIELD OF VIEW	56°x42°
MIN. FOCUSING DISTANCE	0.3m
VCA DISTANCE HUMAN	18.6m (61ft)
VCA DISTANCE VEHICLE	49m (161ft)
HEAT DETECTION DISTANCE	20m(66ft)
APERTURE	F1.1

## OPTICAL MODULE

MAX. IMAGE RESOLUTION	2592*1944
IMAGE SENSOR	1/2.7" Progressive Scan CMOS
MIN. ILLUMINATION	Color: 0.003 Lux @(F1.6, AGC ON), B/W: 0 @IR ON
SHUTTER SPEED	1/5 s to 1/100,000 s
LENS (FOCAL LENGTH)	3.6mm
FIELD OF VIEW	Horizontal: 81°, Vertical: 57°, Diagonal: 108°
WDR	120 dB
DAY & NIGHT	IR cut filter with auto switch
BI-SPECTRUM IMAGE FUSION	Fusion view of thermal view and overlaid details of the optical channel
SUPPLEMENT LIGHT TYPE	IR and Warm Light
SUPPLEMENT LIGHT RANGE	Up to 30 m (IR) / 15m (Warm light)
IR WAVELENGTH	850nm
SMART SUPPLEMENT LIGHT	Yes
WARNING LIGHT	1 Red & 1Blue flashing light

## SMART FUNCTION

TEMPERATURE MEASUREMENT	Gobal, 12 points, 12 areas, and 12 line.
TEMPERATURE RANGE	-20 °C to + 150 °C (-4 °F to + 302°F)
TEMPERATURE ACCURACY	± 8 °C (± 14.4 °F)
FIRE DETECTION	Yes

AI FEATURES	Optical: Intrusion, Region Entrance, Region Exiting, Line Crossing, Pedestrian & Vehicle, Object Detection, Crossing Counting, Crowd Density, Queue Length, Heat MAP, Rare Sound, Face Detection
	Thermal: Intrusion, Region Entrance, Region Exiting, Line Crossing detection, Fire detection, Temperature exception alarm, Pedestrian & Vehicle

## NETWORK

MAIN STREAM	Visible Light: 50Hz@25fps: 5MP(2592x1944),4MP(2592x1520),3MP(2304x1296), 1080P(1920x1080), 960P(1280*960),720P(1280x720)
	60Hz@30fps: 5MP(2592x1944),4MP(2592x1520),3MP(2304x1296), 1080P(1920x1080), 960P(1280*960),720P(1280x720) Thermal: 50Hz/60Hz@25fps: 1280*720, 640x480
SUB-STREAM	Visible Light: 50Hz@25fps: 720P(1280x720),VGA(640x480),QVGA(320x240) 60Hz@30fps: 720P(1280x720),VGA(640x480),QVGA(320x240)
	Thermal: 50Hz/60Hz@25fps: 640 x 480, 320x240
MOBILE STREAM	Visible Light: 50Hz@25fps: VGA(640x480),QVGA(320x240) 60Hz@30fps: VGA(640x480),QVGA(320x240)
VIDEO COMPRESSION	H.265/H.265+/H.264/H.264+MJPEG
AUDIO COMPRESSION	G.711u/G.711a
PROTOCOLS	TCP/IP,HTTP,DHCP,DNS,DDNS,RTSP,SMTP,NTP,UPnP,SNMP,HTTPS,FTP
USER/HOST LEVEL	3 users, 2 levels: Administrator, User
SECURITY MEASURES	User authentication (ID and PW), HTTPS encryption, IP address filtering

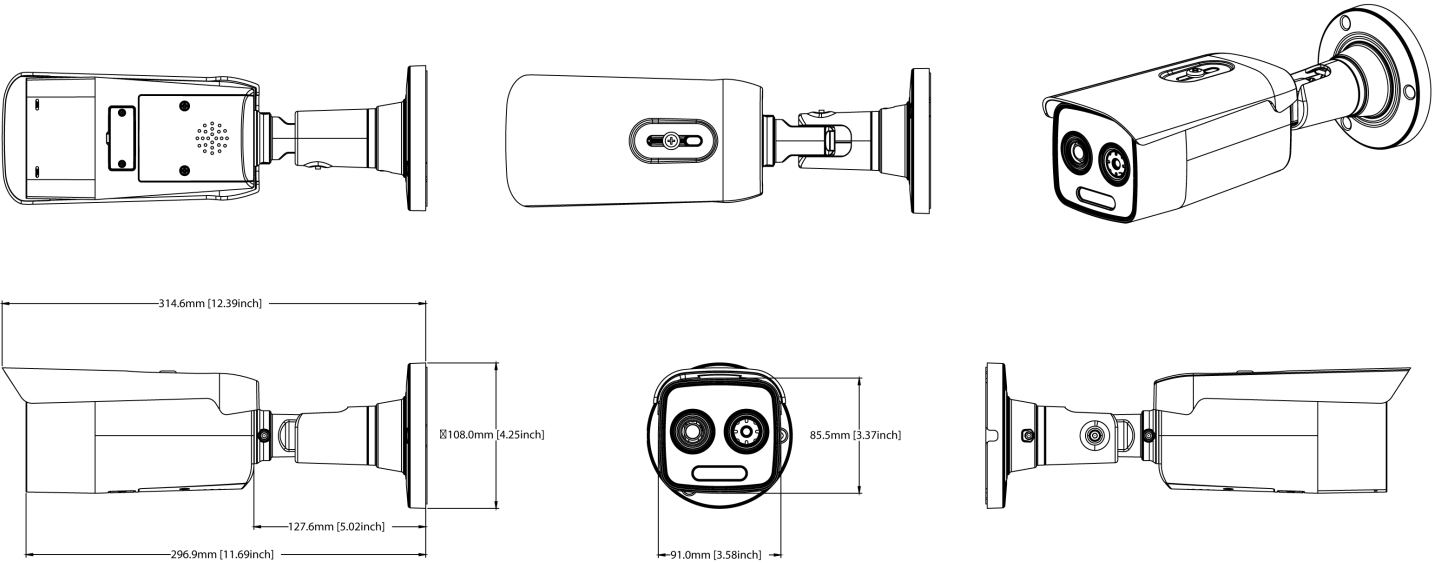
## INTEGRATION

ALARM INPUT	1-ch inputs
ALARM OUTPUT	1-ch outputs
ALARM ACTION	SD recording/Alarm output/smart capture/FTP upload/ email linkage/ audio alarm/Red & Blue flashing light
AUDIO INPUT	1-ch
AUDIO OUTPUT	1-ch outputs/ 1 Built-in speaker
RESET	Yes
COMMUNICATION INTERFACE	1, RJ45 10M/100M self-adaptive Ethernet interface.
SD MEMORY CARD	Built-in micro SD card slot (up to 256GB)
ANALOG VIDEO OUTPUT(BNC)	NA
WEB BROWSER	IE10/11, Safari V12.1 above, Firefox V.52 above, Google chrome V.57 above, Edge V.79 above

## GENERAL

MENU LANGUAGE	English, Russian, German, Italian, French, Portuguese, Spanish, Turkish, Japanese
POWER	12 VDC ± 20%, PoE (802.3af)
POWER CONSUMPTION	Max.10.4W
WORKING TEMPERATURE/ HUMIDITY	Temperature: -35 °C to 60 °C (-31 °F to 140 °F) ; Humidity: 90% or less
PROTECTION LEVEL	IP67
DIMENSIONS	ø108mm*314.6mm(ø4.25"*12.39")
WEIGHT	Approx. 1.25kg(2.76lb)
ENVIRONMENT	RoHS2.0

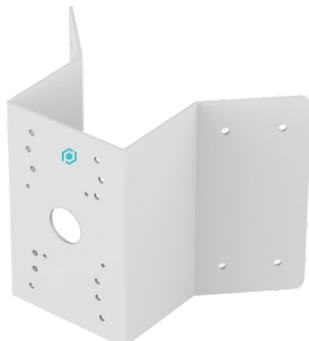
## DIMENSIONS



## ACCESSORIES



**WMB5**  
WALLMOUNT BRACKET



**COMB6**  
CORNER MOUNT BRACKET



**PMB6**  
POLE MOUNT BRACKET

2024 Global Surveillance Distribution, G.S.D Group and G.S.D are registered trademarks of Global Surveillance Distribution Group, Inc. in Canada and / or other countries. We reserve the right to change the design and specifications of the product Without notice and without incurring any obligation.